






# Stadt Hildesheim Landschaftsrahmenplan



## Textkarte 2.3-1: Für den Naturschutz aus landesweiter Sicht wertvolle Bereiche


**Biotope** **Flora** **Fauna**  
  


### Brutvögel

 EU-SPA  
 landesweit  
 regional  
 lokal  
 Status offen

### Gastvögel

 lokal  
 Status offen

 lfd. Nr. (s. Tabellen "wertvolle Bereiche")

 International Bird Areas (IBA)

 Stadtgrenze

Der Darstellung liegen Daten des NLWKN und des Michael-Otto-Instituts im NABU zugrunde.

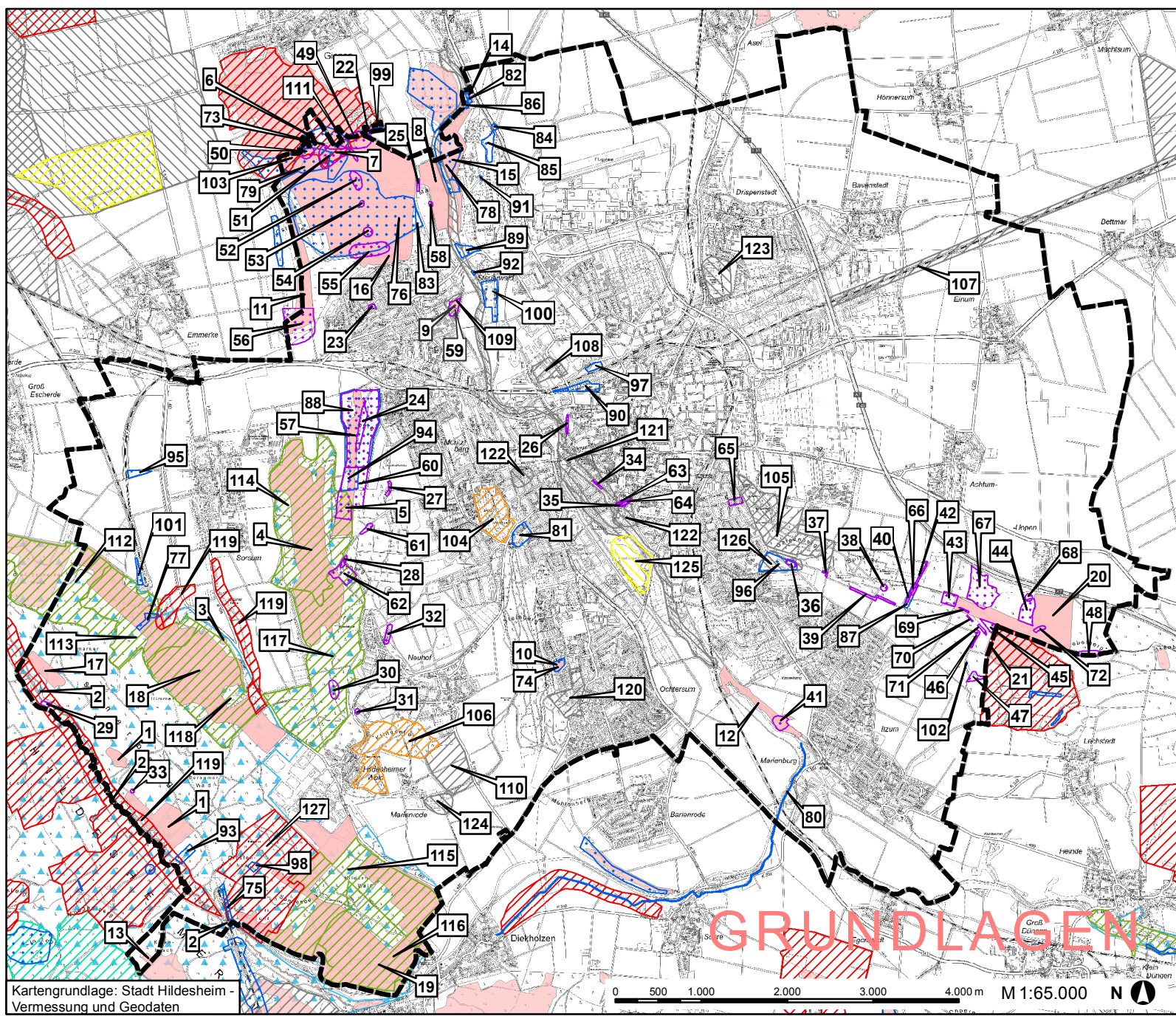


Stadt Hildesheim

Bearbeitung:



Umweltplanung & IT  
Hildesheim, Sept. 2013



Kartengrundlage: Stadt Hildesheim - Vermessung und Geodaten